

# M a t e r i a l s

J e f f S n y d e r

# M a t e r i a l s

(2007)

by Jeff Snyder

for large ensemble

Alto Flute

2 Bb Bass Clarinets

2 Horns in F

Trumpet in C (piccolo trumpet optional)

Tenor Trombone

1 Percussionist:

woodblocks (4)

temple blocks (5)

low-pitched wooden box

metal objects (3)

Accordion

Electric Guitar

Live Electronics (modular synthesizer soloist)

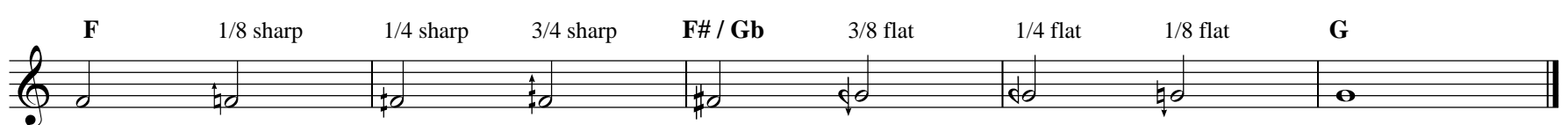
2 Violins

1 Viola

1 Violoncello

1 Bass

explanation of tuning notation:



# Materials

Jeff Snyder (2007)

♩=136

5

Alto Flute

Bb Bass Clarinet 1

Bb Bass Clarinet 2

Horn in F 1

Horn in F 2

Trumpet in C

Tenor Trombone

Percussion

woodblocks

*mf*

Accordion

Electric Guitar

Electronics

grainy drone

low thumps are added

Violin 1

Violin 2

pizz.

*f*

Viola

'Cello

Bass

**A**

10 *mf* *p* temple blocks (extremely subtle)

15 *p* temple blocks (extremely subtle)

low thumps with occasional mid knocks

*pizz.* *f* *pizz.* *p*



20

*p* *p*



25

*p* *p*

30 35

Perc.

E.Gtr.

Elec.

Vln. I

Vln. II

Vla.



40

Perc.

E.Gtr.

Elec.

Vln. I

Vln. II

Vla.

45

B. Cl. 1

B. Cl. 2

Perc.

E.Gtr.

Elec.

Vln. I

Vln. II

Vla.

Vc.

Cb.

*f*

*p*

*mf*

The musical score for page 45 consists of ten staves. The first two staves, B. Cl. 1 and B. Cl. 2, feature a melodic line with a long slur and a dynamic marking of *f*. The Percussion staff has a rhythmic pattern with triplets and quintuplets, ending with a *p* dynamic. The E.Gtr. and Elec. staves are empty. The Vln. I staff has a melodic line with accents. The Vln. II staff has a melodic line with accents. The Vla. staff has a melodic line with triplets and quintuplets, ending with a *p* dynamic. The Vc. staff has a melodic line with quintuplets. The Cb. staff has a melodic line with a long slur and a dynamic marking of *mf*.

50

B. Cl. 1

B. Cl. 2

Perc.

E.Gtr.

Elec.

Vln. I

Vln. II

Vla.

Vc.

Cb.

*f*

*f*

*p*

*mf*



55

Perc.

E.Gtr.

Elec.

Vln. I

Vln. II

Vla.

Vc.

*p*

**B**

60 65

Hn. 1 *f*

Hn. 2 *mp* *mf*

Tpt. *f* *mp*

Trb. *mf*

Perc.

E.Gtr. slow chords, fading in

Elec.

Vln. I

Vln. II

Vc.



70

B. Cl. 1

B. Cl. 2

Hn. 1 *mf* *p* *mf* *mp*

Hn. 2 *p* *mf*

Tpt. *f*

Trb. *p* *mp*

E.Gtr.

Elec.





90

flute: choose a different playing technique or articulation for each note

A. Fl.

B. Cl. 1

B. Cl. 2

Hn. 1

Hn. 2

Tpt.

Trb.

E.Gtr.

Elec.



95

100

A. Fl.

B. Cl. 1

B. Cl. 2

Hn. 1

Hn. 2

Trb.

Perc.

E.Gtr.

Elec.

Cb.

metal objects

105

B. Cl. 1

B. Cl. 2

Hn. 1

Hn. 2

Trb.

Perc.

E.Gtr.

Elec.

Cb.

*mf*

*f*

metal objects



110

115

choose a different playing technique or articulation for each note

A. Fl.

B. Cl. 1

B. Cl. 2

Hn. 1

Hn. 2

Trb.

Perc.

E.Gtr.

Elec.

Cb.

*mf*

*f*

*f*

*f*

*f*

*f*

*p*

120

A. Fl.

B. Cl. 1

B. Cl. 2

Hn. 1

Hn. 2

Trb.

Perc.

E.Gtr.

Elec.

Cb.



125

130

B. Cl. 1

B. Cl. 2

Hn. 1

Hn. 2

Tpt.

Trb.

Perc.

E.Gtr.

Elec.

A. Fl.

B. Cl. 1

B. Cl. 2

Hn. 1

Hn. 2

Tpt.

Trb.

Perc.

Acc.

E.Gtr.

Elec.

*f*

*p*

*8va*

natural harmonics with volume pedal fades

Detailed description: This page of a musical score contains ten staves for different instruments. The A. Fl. staff shows a melodic line starting in the fourth measure. The B. Cl. 1 and B. Cl. 2 staves feature sustained notes with a forte (*f*) dynamic marking. The Hn. 1 and Hn. 2 staves have melodic lines with slurs. The Tpt. staff has notes with slurs and a dynamic marking of *p*. The Trb. staff has a single note in the first measure. The Perc. staff has a rhythmic pattern in the first measure. The Acc. staff has notes with a dynamic marking of *p* and an *8va* marking. The E.Gtr. staff has a wavy line representing natural harmonics with volume pedal fades. The Elec. staff is a solid line.

140 145

A. Fl.

Perc. low wooden box or drum \* (damp) *mp*

Acc. (8) quick release *p* *p*

E.Gtr.

Elec.

Cb. very sudden attack and very sudden release, like a switch being turned on and off *p* *p*



150 155

A. Fl.

Perc. \* *p*

Acc. (8) *p* *p*

E.Gtr.

Elec.

Cb. *p*

160

A. Fl.

Perc.

Acc. (8) *p*

E.Gtr.

Elec.

violin1 - stac *pizz.* *f*

violin2 - stac *pizz.* *f*

Cb. *p*



D

165

A. Fl.

Perc. metal or snare *f* harsh metal *f* metal low box

Acc. (8) *p* *p*

E.Gtr. improvise sparse bass notes occasionally

Elec. 1 pitched material, slow attack, fast decay

violin1 - stac

violin2 - stac

Vla. non vib. *f* *f* *f* *f*

Vc. non vib. *f* *f* *f*

Cb. non vib. *f*

170

A. Fl. *f.t.* *f* 175

B. Cl. 1 overtone gliss. *f*

B. Cl. 2 *f*

Tpt. solotone mute *mf*

E.Gtr. 2

Elec.

violin1 - stac

Vln.II arco non vib. *f* *f* *f* *f* *f* *sim.* sul G

Vla. *f* *f* *f* *f* *f* *sim.*

Vc. *f* *f* *f* *f* *sim.*

Cb. *f* *f* *8va* sul D



180

A. Fl.

B. Cl. 1 (overtone gliss.)

B. Cl. 2

Hn. 1 con sord.

Hn. 2 con sord.

Tpt. mf

Trb. con sord. mf

Acc. bass buttons f

E.Gtr. 3

Elec.

Vln. II

Vla.

Vc.

Cb. sim. sul D





whistle into flute instead of playing  
f.t.

200

A. Fl. *p* *f*

B. Cl. 1 *f*

B. Cl. 2 *f*

Hn. 1 *mf*

Hn. 2 *p* *mf* *mf*

Tpt. *mf* *mf*

Acc. *f* *f*

E.Gtr. 7 8

Elec.

Vln. I *f* *f* *f* *f* *f* *f* *f*

Vln. II

Vla.

Vc.

Cb.

whistle into the flute without playing

205 210

A. Fl. *p*

B. Cl. 1 *f*

B. Cl. 2 *f*

Hn. 1 *mf* *mf*

Hn. 2 *mf*

Tpt. *mf* *mf*

Trb. *f*

Acc. *f*

E.Gtr.

9

Elec.

Vln. I *f* *f* *f* *f* *f*

Vln. II

Vla.

Vc.

Cb. *sul A* (if possible, otherwise omit entirely)



220

whistle into flute without playing

*p*

*f*

*mf*

*p* *mf* *f*

*mf* *mf*

*mf* *f*

*f*

12

*f* *f*





235

A. Fl.

B. Cl. 1

B. Cl. 2

Hn. 1

Hn. 2

Tpt.

Trb.

Acc.

E.Gtr.

Elec.

Vln. I

Vln. II

Vla.

Vc.

Cb.

14

slow attack, slow decay

harmonic gliss

*f*

*mf*

*p*

Detailed description: This is a page of a musical score for a symphony or concert band. It features 14 staves for different instruments. The instruments listed on the left are: A. Fl. (Alto Flute), B. Cl. 1 (Bass Clarinet 1), B. Cl. 2 (Bass Clarinet 2), Hn. 1 (Horn 1), Hn. 2 (Horn 2), Tpt. (Trumpet), Trb. (Trombone), Acc. (Accordion), E.Gtr. (Electric Guitar), Elec. (Electric Bass), Vln. I (Violin I), Vln. II (Violin II), Vla. (Viola), Vc. (Violoncello), and Cb. (Contrabass). The score includes various musical notations such as notes, rests, slurs, and dynamic markings. Key markings include '235' at the top, '14' under the Electric Guitar staff, and 'slow attack, slow decay' above the Electric Bass staff. Specific performance instructions like 'harmonic gliss' are present for the Clarinets. Dynamic markings include *f* (forte), *mf* (mezzo-forte), and *p* (piano). The Electric Guitar staff has a thick black line, indicating it is silent. The Electric Bass staff has a thick black line with the instruction 'slow attack, slow decay'. The Viola and Violoncello staves have a 12/8 time signature. The Contrabass staff has a 2/2 time signature.

240 245

A. Fl. *f*

B. Cl. 1 *f*

B. Cl. 2 *f*

Hn. 1 *mf* *f*

Hn. 2 *mf* *f* *mf*

Tpt. *mf* *f*

Trb. *f*

Acc. *f* *f*

E.Gtr. 15 16

Elec.

Vln. I *f* *f*

Vln. II *f* *f* *f* *f*

Vla. *f* *f*

Vc. *f* *f* *f*

Cb. *f* *f*

250

whistle into flute without playing

A. Fl.

B. Cl. 1

B. Cl. 2

Hn. 1

Hn. 2

Tpt.

Trb.

Acc.

E.Gtr.

Elec.

Vln. I

Vln. II

Vla.

Vc.

Cb.

17

A. Fl. *f* harmonic gliss

B. Cl. 1 *f*

B. Cl. 2 *f*

Hn. 1 *f* *p* *p*

Hn. 2 *p*

Tpt. *f*

Trb. *f*

Acc. *f*

E.Gtr.

18 19

Elec.

Vln. I *f*

Vln. II *f* *f* *f* arco

Vla. *f* *f*

Vc. *f* *f*

Cb. *f* *f*





normal 275

A. Fl. *mf*

B. Cl. 1 harmonic gliss *mp*

B. Cl. 2 harmonic gliss *mp*

Hn. 1 *p*

Hn. 2 *p*

Tpt. *p*

Trb. *p*

Acc. *mp*

E.Gtr.

22

Elec.

Vln. II *f* *f* *f* *f* *f* *f*  
*col legno batt. allow to ricochet* *arco*

Vla. *f* *f* *f* *f* *f* *f*  
*col legno batt. allow to ricochet* *arco*

Vc. *f* *f* *f* *f*

Cb. *f* *f* *f*

280

A. Fl.

B. Cl. 1

B. Cl. 2

Hn. 1

Hn. 2

Tpt.

Trb.

E.Gtr.

23 24

Elec.

Vln. II

Vla.

Vc.

arco

col legno batt.  
allow to ricochet

Cb.

Detailed description of the musical score: The score is for page 30, measures 23 and 24. It features a woodwind section (A. Fl., B. Cl. 1, B. Cl. 2, Hn. 1, Hn. 2, Tpt., Trb.), a string section (Vln. II, Vla., Vc., Cb.), and a guitar section (E.Gtr., Elec.). The woodwinds and strings play melodic lines with various dynamics (mp, f, p). The guitar section has a 'slow attack, slow decay' instruction. The double bass (Cb.) has a 'col legno batt. allow to ricochet' instruction. The page number '280' is in a box at the top. Measure numbers '23' and '24' are placed below the E.Gtr. staff.



285 290

B. Cl. 1 *mp* *f*

B. Cl. 2 *mp* *f*

Hn. 1 *f* *f*

Hn. 2 *f* *f* *f*

Tpt. *f* *f*

Trb. *f*

Acc. *mp* *f*

E.Gtr.

25

Elec. fast attack, fast decay

Vln. I *f* *f* *f*

Vln. II *f* *f* *f*

Vla. *f* *f*

viola - stac. col legno batt. allow to ricochet

Vc. *f* *f* *f*

Cb.

whistle into flute without playing 295

A. Fl.

B. Cl. 1

B. Cl. 2

Hn. 1

Hn. 2

Tpt.

Acc.

E.Gtr.

26

Elec.

Vln. I

Vln. II

viola - stac

col legno batt.  
allow to ricochet

cello - stac

Cb.

*f*

*p*

*f*

*mf*

*mf*

*mf*

*mp*

*f*

*f*

*mf*

*mf*

*mp*

pizz.

pizz.

pizz.



305

B. Cl. 1

B. Cl. 2

Hn. 1

Hn. 2

Tpt.

Trb.

Acc.

E.Gtr.

28

Elec.

violin1 - stac

violin2 - stac

viola - stac

cello - stac

col legno batt.  
allow to ricochet

B. Cl. 1

B. Cl. 2

Hn. 1  
senza sord.  
(but with plunger mute over bell for volume?)  
*pp*

Hn. 2  
senza sord.  
(but with plunger mute over bell for volume?)  
*pp*

Tpt.  
senza sord.  
but with plunger mute over bell for volume control  
*pp*

Trb.  
senza sord.  
but with plunger mute over bell for volume control  
*pp*

Acc.

E.Gtr.

Elec.

violin1 - stac

violin2 - stac

Vc.

320

B. Cl. 1

B. Cl. 2

Hn. 1

Hn. 2

Tpt.

Trb.



325

330

B. Cl. 1

B. Cl. 2

Hn. 1

Hn. 2

Tpt.

Trb.

335 340

B. Cl. 1

B. Cl. 2

Hn. 1

Hn. 2

Tpt.

Trb.



345

B. Cl. 1

B. Cl. 2

Hn. 1

Hn. 2

Tpt.

Trb.

**H**

Musical score for page 38, featuring woodwinds, brass, and strings. The score includes parts for B. Cl. 1, B. Cl. 2, Hn. 1, Hn. 2, Tpt., Trb., E.Gtr., Elec., Vln. I, Vln. II, Vla., and Vc. The woodwind and brass parts have specific markings and dynamics.

Measure numbers 350 and 355 are indicated in boxes above the B. Cl. 1 staff.

Dynamic markings include *mp* (mezzo-piano) for the woodwinds and *f* (forte) for the strings.

Performance instructions include *pizz.* (pizzicato) for the strings.



360

B. Cl. 1

B. Cl. 2

Hn. 1

Hn. 2

Tpt.

Trb.

E.Gtr.

Elec.

Vln. I

Vln. II

Vla.

Vc.

*mp*

*mp*

*f*

*f*

col legno batt.

pizz.

B. Cl. 1

B. Cl. 2

Hn. 1

Hn. 2

Tpt.

Trb.

E.Gtr.

Elec.

Vln. I

Vln. II

Vla.

Vc.

365

370

*mp*

B. Cl. 1

B. Cl. 2

Hn. 1

Hn. 2

Tpt.

Trb.

E.Gtr.

Elec.

Vln. I

Vln. II

Vla.

Vc.

375

*mf*

*mf*

begin to improvise, palm-muted

*mf*

*mp*

col legno batt.

380

I

B. Cl. 1

B. Cl. 2

Hn. 1

Hn. 2

Tpt.

Trb.

E.Gtr.

Elec.

Vln. I

Vln. II

Vla.

Vc.

Cb.

*mf*

*mf*

*mp*

*p*

*mp*

*p*

*mf*

*mp*

*p*

*mp*

*p*

*p*

*p*

*pizz.*

*pizz.*

385

B. Cl. 1

B. Cl. 2

Hn. 1

Hn. 2

Tpt.

Trb.

E.Gtr.

Elec.

Vln. I

Vln. II

Vla.

Vc.

Cb.

This page of a musical score includes the following parts and their respective musical content:

- B. Cl. 1**: Treble clef, rests in the first two measures, then a half note G4 with a slur and *mf* dynamic.
- B. Cl. 2**: Treble clef, rests in the first two measures, then a half note G4 with a slur and *mf* dynamic.
- Hn. 1**: Treble clef, rests in the first two measures, then a half note G4 with a slur.
- Hn. 2**: Treble clef, a half note G4 in the first measure, rests in the second and third, then a half note G4 in the fourth.
- Tpt.**: Treble clef, rests in the first two measures, then a half note G4 with a slur.
- Trb.**: Treble clef, a half note G4 in the first measure, rests in the second and third, then a half note G4 in the fourth.
- E.Gtr.**: Treble clef, a wavy line indicating tremolo throughout the entire page.
- Elec.**: Bass clef, a solid horizontal line throughout the entire page.
- Vln. I**: Treble clef, eighth notes G4, A4, B4, C5, with a *f* dynamic at the end.
- Vln. II**: Treble clef, eighth notes G4, A4, B4, C5, with a *f* dynamic at the end.
- Vla.**: Bass clef, eighth notes G3, A3, B3, C4, with a *f* dynamic at the end.
- Vc.**: Bass clef, eighth notes G3, A3, B3, C4.
- Cb.**: Bass clef, eighth notes G3, A3, B3, C4.

390

B. Cl. 1

B. Cl. 2

Hn. 1

Hn. 2

Tpt.

Trb.

E.Gtr.

Elec.

Vln. I

Vln. II

Vla.

Vc.

Cb.

*f*

*p*

Detailed description of the musical score: The score is for page 45, starting at measure 390. The instruments listed are B. Cl. 1, B. Cl. 2, Hn. 1, Hn. 2, Tpt., Trb., E.Gtr., Elec., Vln. I, Vln. II, Vla., Vc., and Cb. In measure 390, B. Cl. 1 and B. Cl. 2 have whole notes with a slur over them. Hn. 1 has a whole rest. Hn. 2 has a quarter note followed by a whole rest. Tpt. has a whole note with a slur. Trb. has a quarter note followed by a whole rest. E.Gtr. has a tremolo pattern. Elec. has a solid line. Vln. I has a quarter rest, followed by a quarter note in measure 391, and a half note in measure 392. Vln. II has a quarter note in measure 390, followed by quarter notes in measure 391, and a quarter note in measure 392. Vla. has a quarter note in measure 390, followed by quarter notes in measure 391, and a quarter note in measure 392. Vc. has a quarter note in measure 390, followed by a quarter rest in measure 391, and a quarter note in measure 392. Cb. has a quarter note in measure 390, followed by a quarter rest in measure 391, and a quarter note in measure 392. Dynamic markings *f* and *p* are present at the beginning and end of measures 390-392 for the string instruments.

395

Score for measures 394-396. The score includes parts for Hn. 1, Hn. 2, Tpt., Trb., E.Gtr., Elec., Vln. I, Vln. II, Vla., Vc., and Cb. Hn. 1 has a long note with a slur and a box containing the number 395. Vln. I has a dynamic marking of *mp*. Vla. and Vc. have dynamic markings of *f*.



Score for measures 397-400. The score includes parts for B. Cl. 1, B. Cl. 2, Hn. 1, Hn. 2, Tpt., Trb., E.Gtr., Elec., Vln. I, Vln. II, Vla., Vc., and Cb. B. Cl. 1 and B. Cl. 2 have long notes with slurs. Vln. I has a dynamic marking of *p*. Vln. II, Vla., Vc., and Cb. have dynamic markings of *f*.



This musical score page, numbered 47, features a variety of instruments. At the top, the woodwind section includes B. Cl. 1 and B. Cl. 2, both playing a sustained note marked *mf* with a dynamic hairpin. A circled number '400' is positioned above the first staff. Below them are the Horns (Hn. 1 and Hn. 2), Trumpet (Tpt.), and Trombone (Trb.). The string section consists of Violin I (Vln. I), Violin II (Vln. II), Viola (Vla.), Violoncello (Vc.), and Contrabass (Cb.). The guitar section includes Electric Guitar (E.Gtr.) and Electric Bass (Elec.). The woodwinds and strings play melodic lines with various articulations, while the guitar and bass provide a rhythmic accompaniment. The score is written in standard musical notation with treble and bass clefs, and includes dynamic markings such as *mf* and *f*.

This page of a musical score includes the following parts and their content:

- B. Cl. 1**: Treble clef, mostly rests with a whole note in the first measure.
- B. Cl. 2**: Treble clef, mostly rests with a whole note in the first measure.
- Hn. 1**: Treble clef, mostly rests with a half note in the third measure.
- Hn. 2**: Treble clef, mostly rests with a half note in the first measure.
- Tpt.**: Treble clef, mostly rests with a half note in the third measure.
- Trb.**: Treble clef, playing a melodic line with a slur across the first and second measures.
- E.Gtr.**: Treble clef, playing a continuous tremolo pattern.
- Elec.**: Bass clef, playing a continuous tremolo pattern.
- Vln. I**: Treble clef, playing a melodic line with a *p* dynamic marking.
- Vln. II**: Treble clef, playing a melodic line with a *p* dynamic marking.
- Vla.**: Bass clef, playing a melodic line with a *p* dynamic marking.
- Vc.**: Bass clef, playing a melodic line with a *p* dynamic marking.
- Cb.**: Bass clef, playing a melodic line with a *p* dynamic marking.

405

B. Cl. 1

B. Cl. 2

Hn. 1

Hn. 2

Tpt.

Trb.

Perc.

E.Gtr.

Elec.

Vln. I

Vln. II

Vla.

Vc.

Cb.

*mf*

*p*

wood

410

B. Cl. 1

B. Cl. 2

Hn. 1

Hn. 2

Tpt.

Trb.

Perc.

E.Gtr.

Elec.

Vln. I

Vln. II

Vla.

Vc.

Cb.

*f*

*f*

*mp*

*mp*

*mp*

B. Cl. 1

B. Cl. 2

Hn. 1

Hn. 2

Tpt.

Trb.

Perc.

E.Gtr.

Elec.

Vln. I

Vln. II

Vla.

Vc.

Cb.

*mf*

*mf*

wood

change to sparse harmonics, not palm-muted

change to static hiss

*p*

*p*

*p*

*p*

*p*

Detailed description: This page of a musical score contains ten staves. The top two staves are for B. Cl. 1 and B. Cl. 2, both playing a sustained note with a *mf* dynamic. The next two staves are for Hn. 1 and Hn. 2, with Hn. 1 playing a melodic line and Hn. 2 playing a sustained note. The Tpt. and Trb. staves have sparse notes. The Perc. staff has a single note with the instruction 'wood'. The E.Gtr. staff has a wavy line with the instruction 'change to sparse harmonics, not palm-muted'. The Elec. staff has a solid line with the instruction 'change to static hiss'. The string staves (Vln. I, Vln. II, Vla., Vc., Cb.) play a rhythmic pattern with *p* dynamics.

B. Cl. 1

B. Cl. 2

Hn. 1

Hn. 2

Tpt.

Trb.

E.Gtr.

Elec.

Vln. I

Vln. II

Vla.

Vc.

Cb.

*mf*

Detailed description: This page of a musical score contains ten staves. The top two staves are for B. Cl. 1 and B. Cl. 2, both showing rests followed by a half note with a dynamic marking of *mf*. The third staff is for Hn. 1, featuring a melodic line with a slur. The fourth staff is for Hn. 2, showing rests and a single note. The fifth staff is for Tpt., with a melodic line and a slur. The sixth staff is for Trb., with a melodic line and a slur. The seventh staff is for E.Gtr., showing a tremolo effect. The eighth staff is for Elec., which is a solid line. The bottom four staves are for Vln. I, Vln. II, Vla., and Vc., all containing complex rhythmic and melodic patterns. The Cb. staff at the bottom contains a bass line with various notes and rests.

420

B. Cl. 1

B. Cl. 2

Hn. 1

Hn. 2

Tpt.

Trb.

Perc. metal

E.Gtr.

Elec.

Vln. I

Vln. II

Vla.

Vc.

Cb.

Detailed description: This page of a musical score, numbered 53, begins at measure 420. It features a full orchestral and chamber ensemble. The woodwinds (Bass Clarinets 1 and 2, Horns 1 and 2, Trumpets, and Trombones) have sparse parts, mostly consisting of rests and occasional notes. The Percussion part is marked 'metal' and has a few notes. The Electric Guitar and Electric Bass parts are represented by solid black lines, indicating they are silent. The string section (Violins I and II, Viola, Violoncello, and Contrabass) has more active parts, with various rhythmic patterns and articulations. The Violin I part starts with a series of eighth notes, while the Violin II part has a more melodic line. The Viola, Violoncello, and Contrabass parts provide harmonic support with sustained notes and rhythmic figures.

425

B. Cl. 1

B. Cl. 2

Hn. 1

Hn. 2

Tpt.

Trb.

Perc.

E.Gtr.

Elec.

Vln. I

Vln. II

Vla.

Vc.

Cb.

*mp*

metal



430

B. Cl. 1

B. Cl. 2

Hn. 1

Hn. 2

Tpt.

Trb.

Perc.

E.Gtr.

Elec.

Vln. I

Vln. II

Vla.

Vc.

Cb.

wood metal

*mp*

This page of a musical score, numbered 56, features rehearsal mark 435. The score is arranged in a vertical stack of staves for various instruments. At the top, the woodwind section includes B. Cl. 1 and B. Cl. 2, both of which are mostly silent with rests. Below them are Hn. 1 and Hn. 2, with Hn. 1 playing a rhythmic pattern and Hn. 2 playing a melodic line. The brass section consists of Tpt., Trb., and E.Gtr. (Electric Guitar), with the trumpet and trombone playing melodic lines and the electric guitar providing a rhythmic accompaniment. The string section includes Elec. (Electric Bass), Vln. I, Vln. II, Vla. (Viola), Vc. (Violoncello), and Cb. (Contrabasso), all of which are playing active parts. The score is written in a standard musical notation style with various clefs and time signatures.

440

B. Cl. 1

B. Cl. 2

Hn. 1

Hn. 2

Tpt.

E.Gtr.

Elec.

Vln. I

Vln. II

Vla.

Vc.

Cb.

Detailed description: This block contains the musical score for measures 440 through 444. The score is arranged in a system of ten staves. The top two staves are for B. Cl. 1 and B. Cl. 2, both featuring a melodic line with a long slur and a *p* dynamic marking. The next two staves are for Hn. 1 and Hn. 2, with Hn. 2 having a melodic line. The Tpt. staff has a melodic line. The E.Gtr. staff has a tremolo pattern. The Elec. staff is a solid line. The Vln. I and Vln. II staves have rhythmic patterns. The Vla. staff has a rhythmic pattern. The Vc. and Cb. staves have rhythmic patterns. A box with the number 440 is located at the top right of the first staff.



445

B. Cl. 1

B. Cl. 2

E.Gtr.

Elec.

Vln. I

Vln. II

Vla.

Vc.

Cb.

Detailed description: This block contains the musical score for measures 445 through 449. The score is arranged in a system of ten staves. The top two staves are for B. Cl. 1 and B. Cl. 2, both featuring a melodic line with a long slur and a *p* dynamic marking. The E.Gtr. staff has a tremolo pattern. The Elec. staff is a solid line. The Vln. I and Vln. II staves have rhythmic patterns. The Vla. staff has a rhythmic pattern. The Vc. and Cb. staves have rhythmic patterns. A box with the number 445 is located at the top right of the first staff.